



**All Summer 2020 courses will be 100% on-line  
and will be entirely asynchronous, except introduction and presentations.**



### **The History and Geography of Iberia**

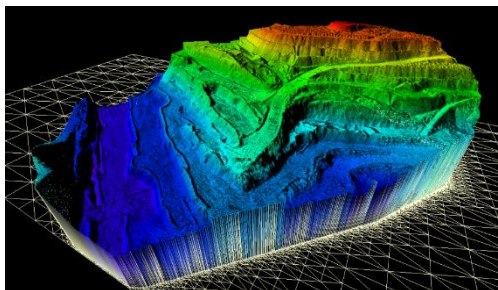
**Monday-Friday, July 6 to July 17 (approx. 3 hours/day)  
45 PDP credits; 3 graduate credits optional for \$225**

An exploration of the rich geographic history, culture, and heritage of Portugal and Spain. We'll study Iberia as a re-emerging cultural node in the European Union, and as a former center of global power. In aligning with the new curriculum frameworks, we will explore key periods of transformation: Moorish conquest, state formation, exploration and empire building, liberal revolutions, authoritarianism, and democratization, and the historical antecedents that have led to regional conflicts among the many nationalist factions.

### **The History and Geography of Water**

**Monday-Friday, July 13 to July 24 (approx. 3 hours/day)  
45 PDP credits; 3 graduate credits optional for \$225**

An interdisciplinary study of the world's most essential resource. We'll examine the historical role of water in shaping human settlements and economies, including ancient, medieval, and colonial water engineering practices. We'll then focus on current threats to water access. In many places, "too much" water floods communities and destroys lives and property. In others, "too little" water pits people against each other. Elsewhere, public water supplies pose a danger to human health. Throughout, we'll explore political, economic, and ethical questions concerning access to water.



### **Geo-Spatial Technologies for the 6-12 Classroom**

**Monday-Friday, July 27 to July 31 (approx. 6 hours/day)  
45 PDP credits; 3 graduate credits optional for \$225**

Learn the fundamentals of GIS and how to integrate it into Massachusetts earth science and social studies curricula. Students are excited to embrace new technologies, especially those that allow them to explore real world problems and create compelling visualizations. GIS is a great tool for investigating topics with a geographic (place-based) component. We will explore a wide range of free apps and software useful in classroom environments. No prior experience with GIS is expected or required.

These courses are intended for all Massachusetts public school teachers, librarians and media specialists.

They will incorporate advance online work that can be completed at any time before the course starts.

All participants will receive \$225 stipends per course.

Final presentations will be online at least three weeks after the last day of the course (see syllabus).

**Register Now!** Contact The Office for Continuing Education at 508.626.4034

For program information contact Center for Global Education Director Dr. Judy Otto at [jotto@framingham.edu](mailto:jotto@framingham.edu)